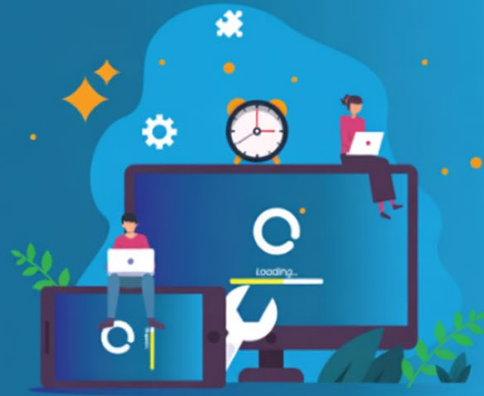


TIMS

Patch Notes



TIMS 26.1.8

Tweaks and Fixes

System

- When accessing TIMS from a terminal server in a different timezone, TIMS now pulls the timezone from Windows (Please contact support for .ini file changes if this affects your team)

Day of Operations

- Walkback was being created on opening of the Day of Operations window where there was a NULL in the plant and/or fuel type description

Roster

- Scratchpad has new interaction options in the Weekly Roster context menu
- When swapping a shift onto the scratchpad, if you saved then closed and re-opened, the shift was missing
- Fixed an error causing the Weekly Roster to be slow to open and save

Workshop

- DataFuel Loader was completing with errors, now all lines import where it contains valid data